

Light & Space
James Turrell

Poetry
Rachel Jamison Webster

Poetry
Carl Auerbach

A Darkness Visible: Afghanistan
Seamus Murphy

Poetry
Helen Wickes

Poem
Bryan C. Henry

Poetry
Jamie Houghton

Installation
Sharon Loudon



MERGE at the Weisman Art Museum

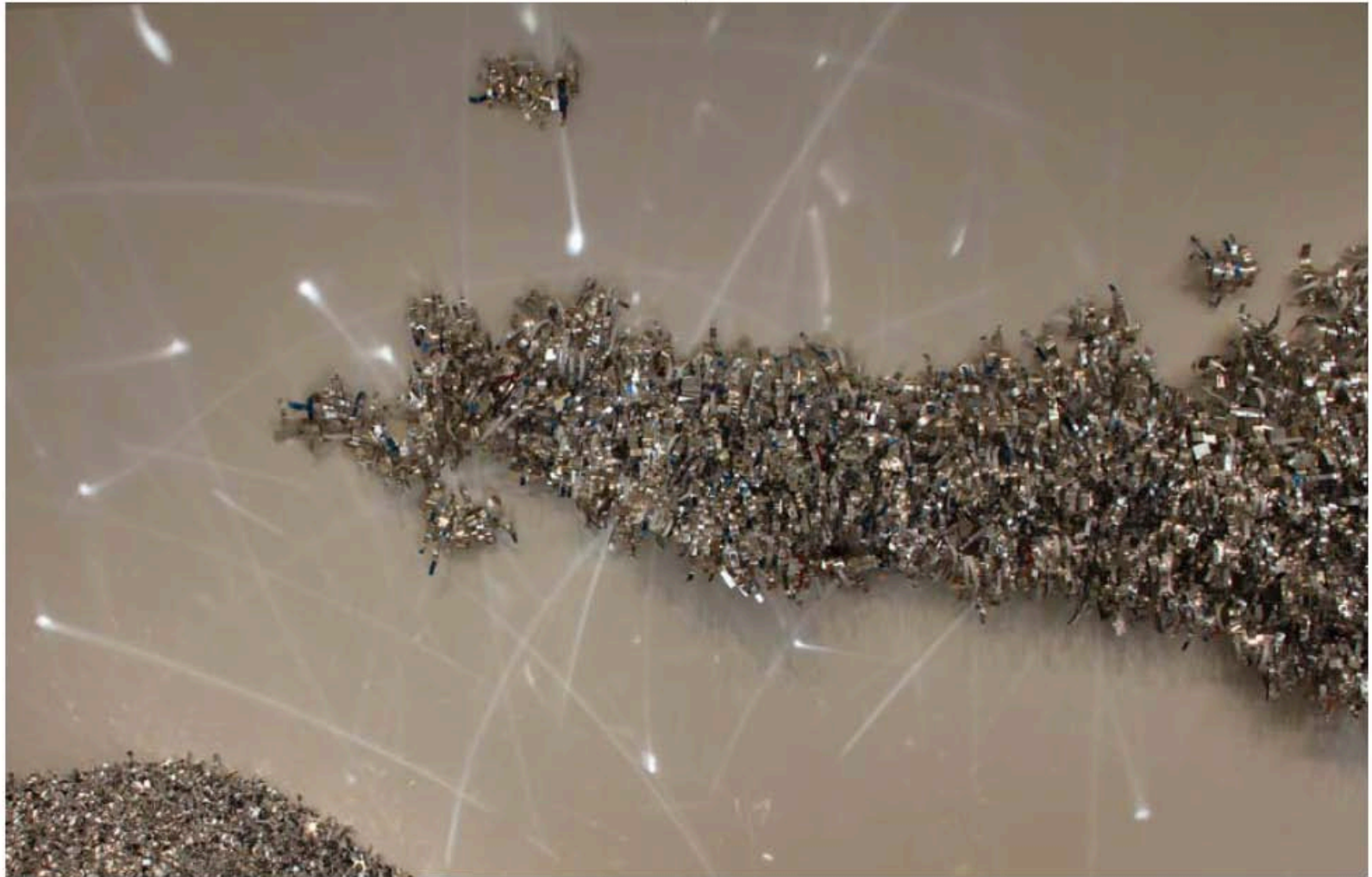
My visual vocabulary is one of movement and gesture, explored through many different media including painting, drawing, animation and installation. The foundation of my work is rooted in painting and drawing, where my gestures transform as what I believe are anthropomorphic beings. Although abstract and formal, these characters have human-like aspects within their minimal state; they are made simply but are full of whimsy and playfulness, elegance and a child-like beauty. Through the specific, awkward placement of these forms, it is my intention for these gestures to evoke movement in space. It is important for me to create the illusion of three-dimensional characters that, through their subtlety and beauty, elicit a powerful presence in their own world.

"Merge" is an installation specifically in dialogue with the museum's Frank Gehry-designed building and his drawings. Made of 250,000 strips of aluminum attached with over 14,000 screws spanning 3,000 square feet, this installation not only physically takes over the gallery space but also shimmers and sparkles with reflected light.

—Sharon Louden







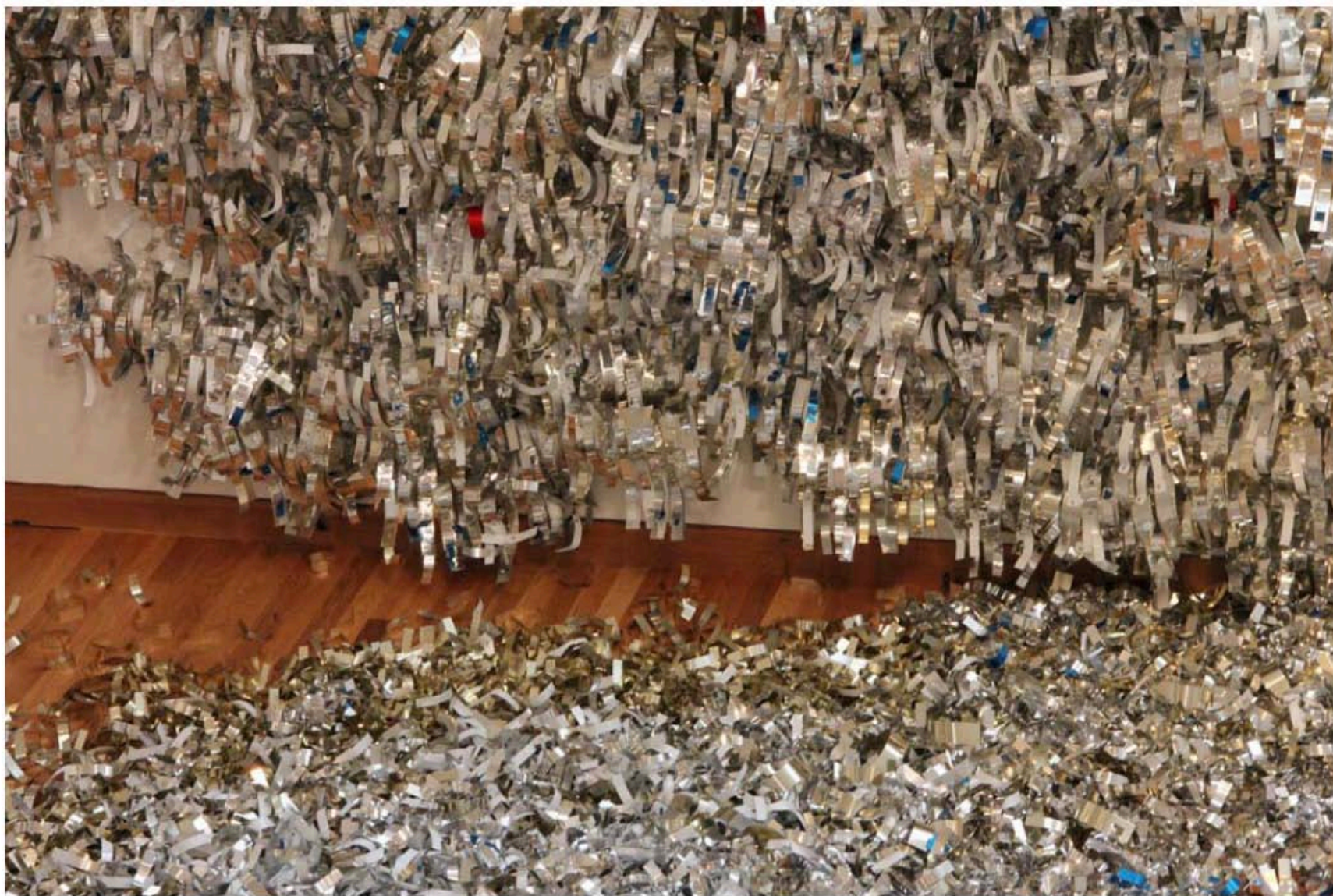


















FOLLY

folly@follymag.com | www.follymag.com

FollyMag is a recently (January 28, 2011) formed 501(c)(3) non-profit organization organized under the Nonprofit Public Benefit Corporation Law for public and charitable purposes within the meaning of Internal Revenue Code section 501(c)(3). The mission of FollyMag is the advancement of the arts, culture and community across disciplines through publications, electronic and other media. *FOLLY*, FollyMag's arts, culture, community, and aesthetics publication, was first published (pdf format) in June 2006. The www.follymag.com website was launched in March 2007. We attempt to highlight the uniqueness and strengths of each artist, set of ideas and organization presented. Thank you to contributors for generously participating and providing material, advice and assistance.