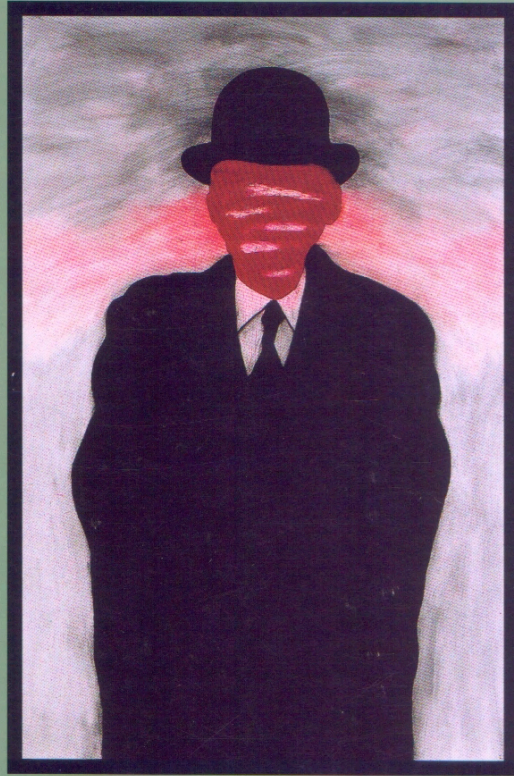


NATIONAL DRAWING INVITATIONAL  
THE ARKANSAS ARTS CENTER



# SHARON M. LOUDEN

Born 1964 in Philadelphia, lives in New York

Education: M.F.A., 1991, Yale University School of Art  
B.F.A., 1988, School of the Art Institute of Chicago  
1982-85, Atlanta College of Art

## Selected Collections:

Amoco Corporation, Chicago  
AT&T, New York  
Hallmark Cards Corporation, Kansas City, Missouri  
National Gallery of Art, Washington, D.C.  
Pfizer, Inc., World Headquarters, New York  
Progressive Corporation, Mayfield Village, Ohio  
Teacher's Insurance and Annuity Association, New York  
The Arkansas Arts Center Foundation

## Selected Exhibitions:

- 1998 Richard Anderson Fine Arts, New York (solo)  
Islip Art Museum, satellite space, East Islip, New York (solo)
- 1997 Gina Fiore Salon of Fine Arts, New York (solo)  
Lipsett Gallery, National Institutes of Health, Bethesda, Maryland (solo)  
*Eye and Hand: Recent American Drawings from a New York Private Collection*, Harvard University Arthur M. Sackler Museum (traveling)  
*Affirm Identity*, Kingsborough Community College Gallery, Brooklyn, New York
- 1996 *Gramercy International Contemporary Art Fair*, Gina Fiore Salon, Los Angeles
- 1995 North Country Museum of Arts, Park Rapids, Minnesota (solo) (traveling)
- 1994 Clayton Staples Gallery at McKnight Arts Center, Wichita State University, Wichita, Kansas (solo)
22. *Agents*, 1996  
acrylic gel medium, graphite on paper  
40 x 26 inches
23. *Big Shiny Hair Pins*, 1996  
ink, acrylic gel medium on mylar  
34 x 22 inches
24. *Crawlers II*, 1996  
charcoal on paper  
29 1/2 x 21 1/2 inches
25. *Crawlers II*, 1996  
charcoal on vellum  
29 1/2 x 21 1/2 inches
26. *Swingers (Knotted Pulleys)*, 1997  
chalk pastel on paper  
30 x 22 inches
- Arkansas Arts Center  
Foundation Purchase, 1997.  
97.30.1-5



24. *Crawlers II*



26. *Swingers (Knotted Pulleys)*